

## Removal of Tambour Shutters

(All Models)



### Shutter Removal



Ensure the tambour doors are in the fully open position. You will see black plastic runners top and bottom. Using a flat head screwdriver release the end clip in the centre of the cupboard



Once end clip is released lift the end and slide the runner towards the centre of the cupboard releasing the runner from the carcass.



Repeat this procedure with the other runner(s)



Both top and bottom runners must be removed.



Open the door fully to remove the shutter from the unit. You will need to tilt the shutter as shown to get it away from the unit.

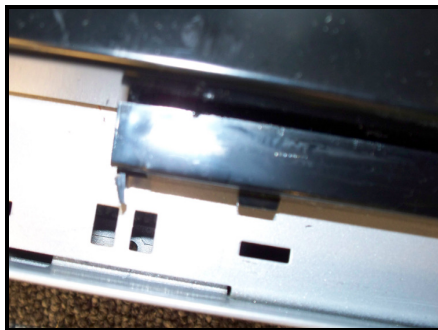
### Shutter Fitting



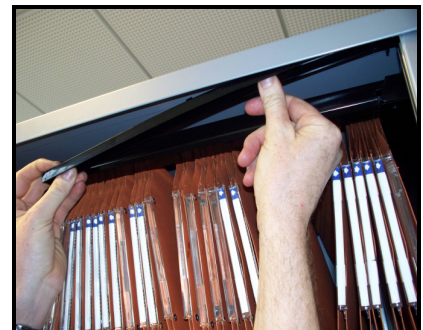
To refit slide the new shutter into the runners in each corner and slide into the fully open position



Reattach the runners by inserting the lugs into the corresponding holes and sliding towards the side



When in place push the end clip into the hole to hold in place.



Repeat this until all the runners are in place and test the doors.



*Please note that when removing and fitting shutters on 800W units (there will be only one shutter which runs across the whole front rather than a pair) you will need to completely empty the unit first and roll the shutter up inside the unit to remove as you will not be able to tilt it out.*