

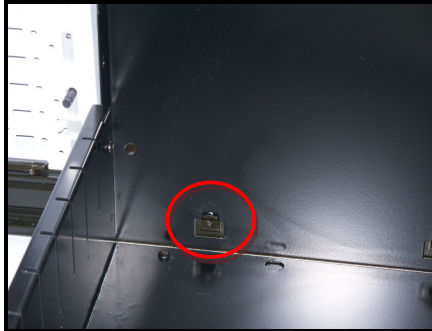
Removal & Fitting of Drawers

(BLF and Systemfile)



Drawer removal : Please ensure the drawer is completely empty

Please take care when removing and refitting drawers as this can be awkward until practised – we recommend 2 people to support each side of the drawer as they can be heavy



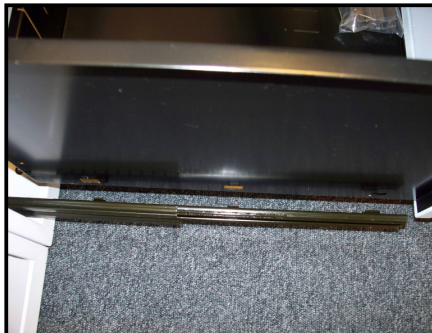
Extend drawer fully, notice that the runners are attached to the side of the drawer by 3 metal lugs



Holding the slide in place lift the back of the drawer upwards and off the rear lug



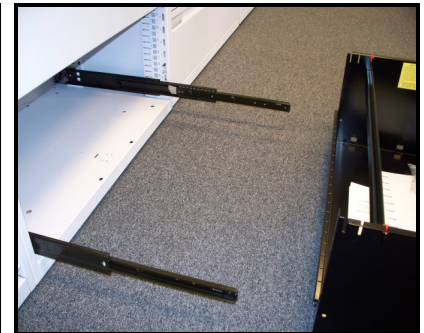
Lift the drawer off the remaining two lugs taking care to support the weight of the drawer.



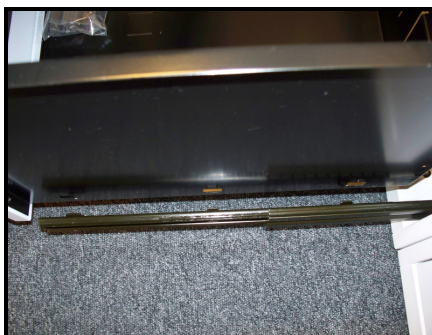
Whilst supporting the weight of the drawer repeat the procedure on the other side of the drawer



The drawer is then free of the runners and can be removed from the unit



Drawer fitting : Fully extend the runners and line up the drawer.



Supporting the weight of the drawer, locate the lugs on the runners into the cutouts in the drawer on both sides



Push down the rear of the drawer on both sides to fully locate the runners tags onto the drawer. You should hear them click into place



Half close the drawer and push down the front of the drawer on both sides. Again the drawer should click into place on the runners.