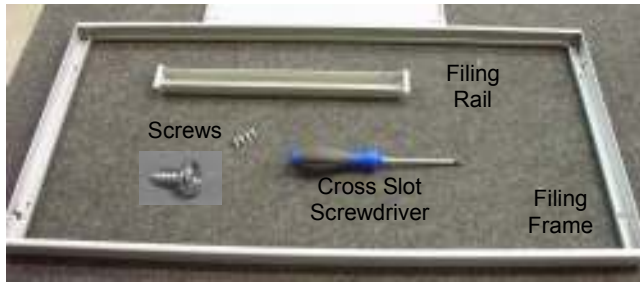
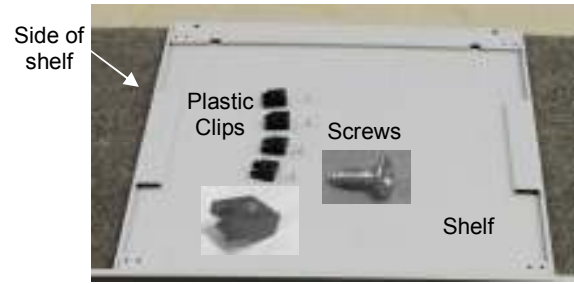


**Fit Sliding Reference Shelf**  
(Towers 2,3 & 4)



**Items you require to fit the Frame**

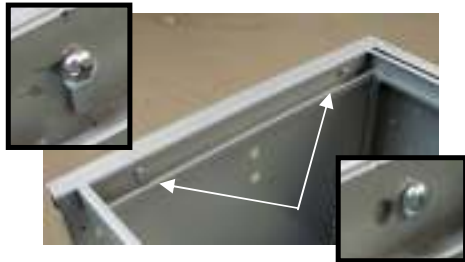
- No.8 x 3/8 (80100530) Screws x 4
  - Filing Frame (FFTW2) x 1
- (Also shown Filing Rail & Screwdriver)



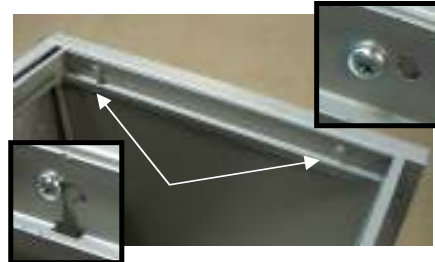
**Items you require to fit the Shelf**

- No.8 x 1/2 (80100534) Screws x 4
- Plastic Guide (80400712) Blocks x 4
- Shelf (SRSTWR) x 1

**To Fit Frame:**



Position frame, locate front screw holes and fix screws.

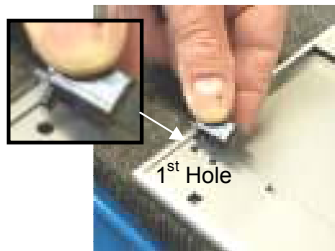


Locate rear screw holes and fix screws.



Fitted Frame.

**To Fit Shelf**



Fit both plastic guide blocks on one side of shelf as above.



Fit the fitted shelf blocks underneath the lip of the rear of frame, and lower shelf onto the front of the frame.



Fit the two front guide blocks onto lowered shelf by accessing from underneath.



Fitted Sliding Reference Shelf.